



## Svizzera

# #31

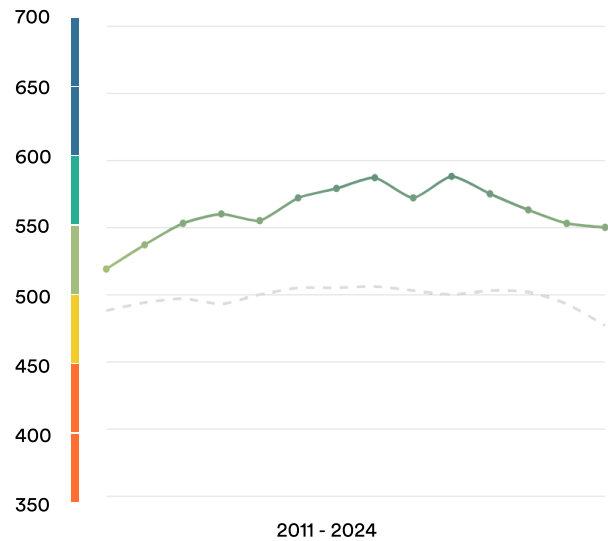
 di 116

Punteggio EF EPI: 550 -3 ▼

Punteggio medio globale: 477

Posizione in Europa: 23 di 35

## Evoluzione nell'EF EPI

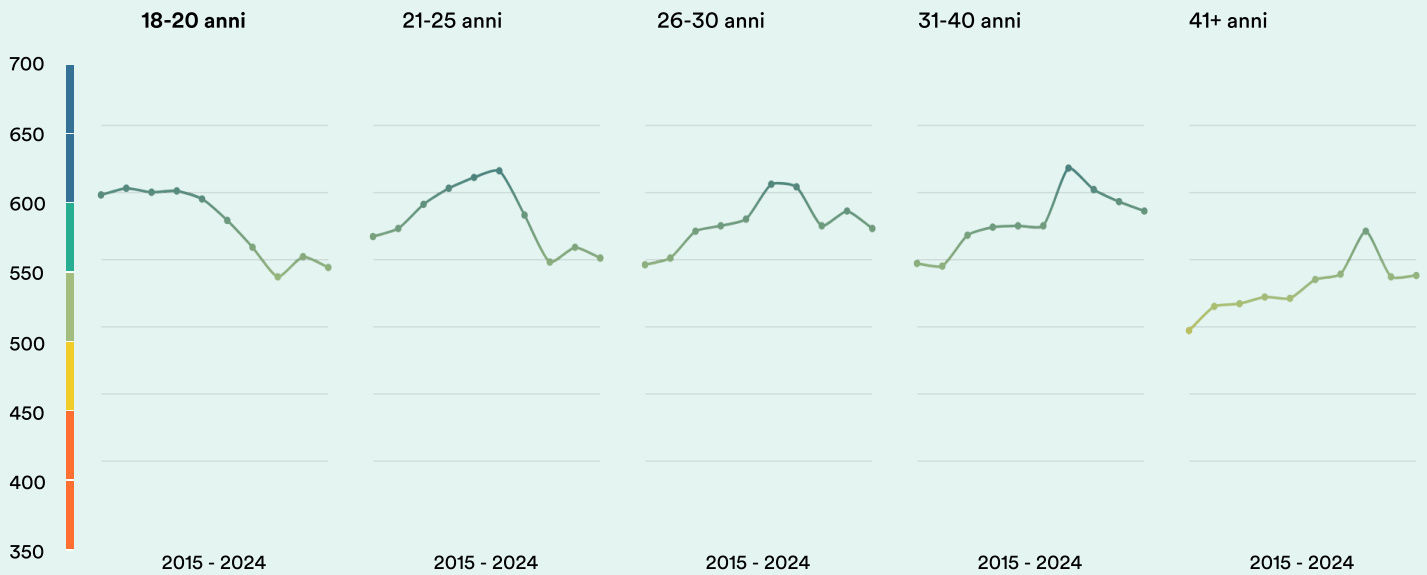


Livello ■ Alto ■ Buono ■ Medio ■ Basso ■ Molto basso

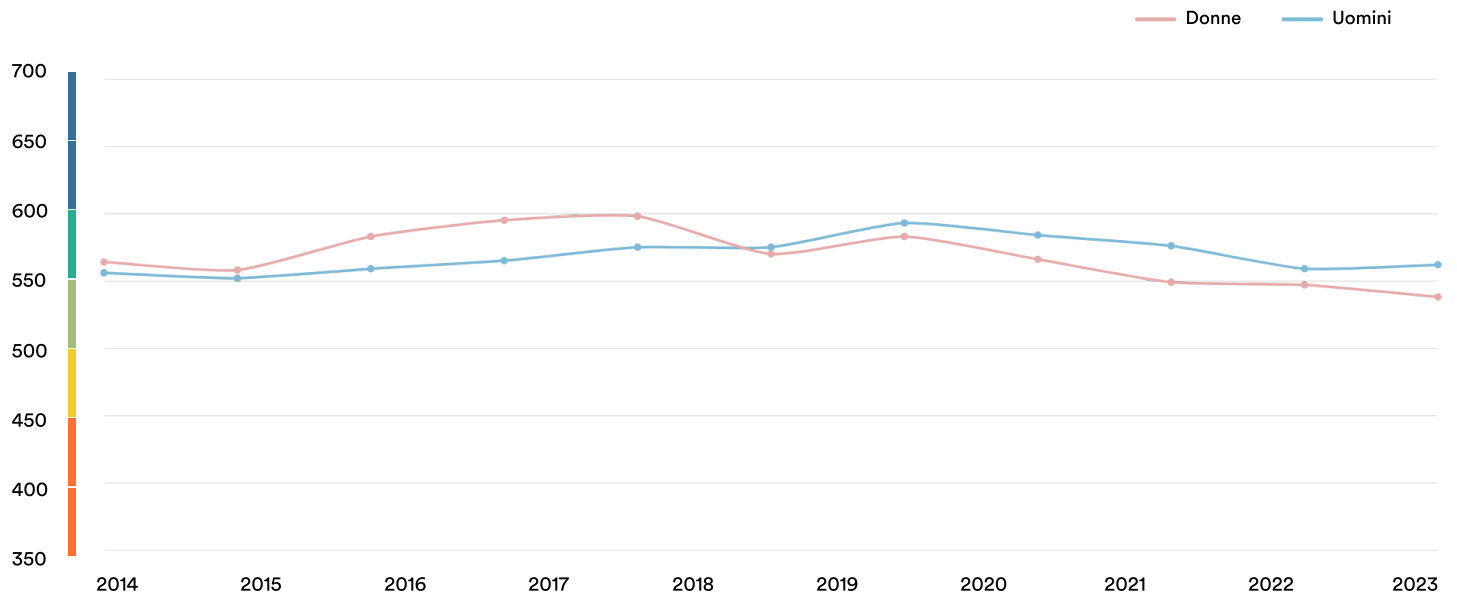
## Risultati geografici

Regioni		Città	
German-speaking	567	Zürich	620
French-speaking	534	Basilea	618
French & German-speaking	531	Berna	614
Italian-speaking	517	Lucerne	613
Basel-Stadt	611	Winterthur	605
Zug	597	St. Gallen	598
Zurich	583	Ginevra	562
Aargau	571	Losanna	560
Basel-Landschaft	570		
Solothurn	560		
Schwyz	559		
Luzern	557		
Thurgau	556		
Sankt Gallen	554		
Bern	547		
Geneva	537		
Valais	536		
Vaud	531		
Graubünden	530		
Neuchâtel	525		
Ticino	517		
Fribourg	514		

## Evoluzione per fascia d'età



## Evoluzione per genere



### About EF EPI

The EF English Proficiency Index (EF EPI) is a ranking of countries and regions by their English skills. This regional fact sheet is a companion to the EF EPI 2024 edition report. To read the full EF EPI report, with the ranking, regional analyses, and demographic trends, visit [www.ef.com/epi](https://www.ef.com/epi).  
(<https://www.ef.com/epi>) The EF EPI is published by Signum International AG.