



Suisse

#31

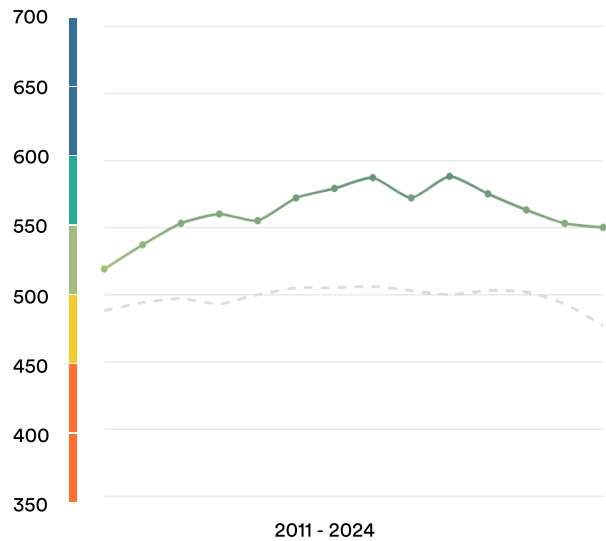
 sur 116

Score EF EPI: 550 -3 ▼

Moyenne globale des résultats: 477

Classement Europe: 23 de 35

Tendances EF EPI



Compétence ■ Très bonne ■ Bonne ■ Moyenne ■ Faible ■ Très faible

Résultats régionaux

Régions

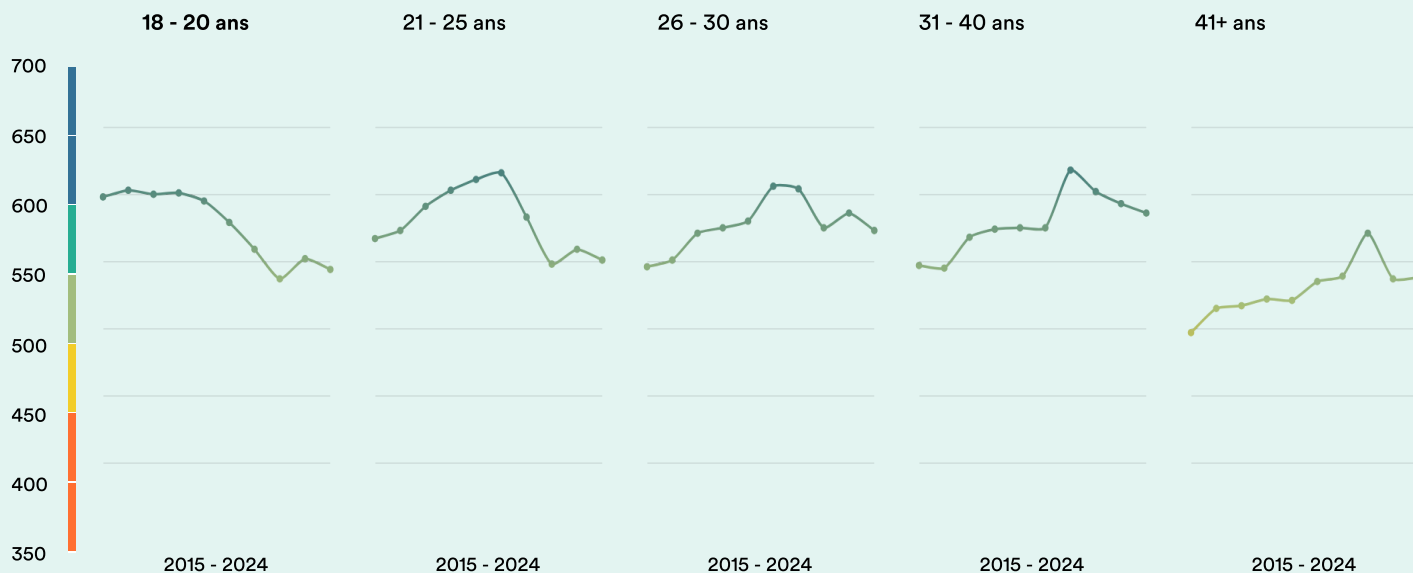
German-speaking	567
French-speaking	534
French & German-speaking	531
Italian-speaking	517
Basel-Stadt	611
Zug	597
Zurich	583
Aargau	571
Basel-Landschaft	570
Solothurn	560
Schwyz	559
Luzern	557
Thurgau	556
Sankt Gallen	554
Bern	547
Geneva	537

Valais	536
Vaud	531
Graubünden	530
Neuchâtel	525
Ticino	517
Fribourg	514

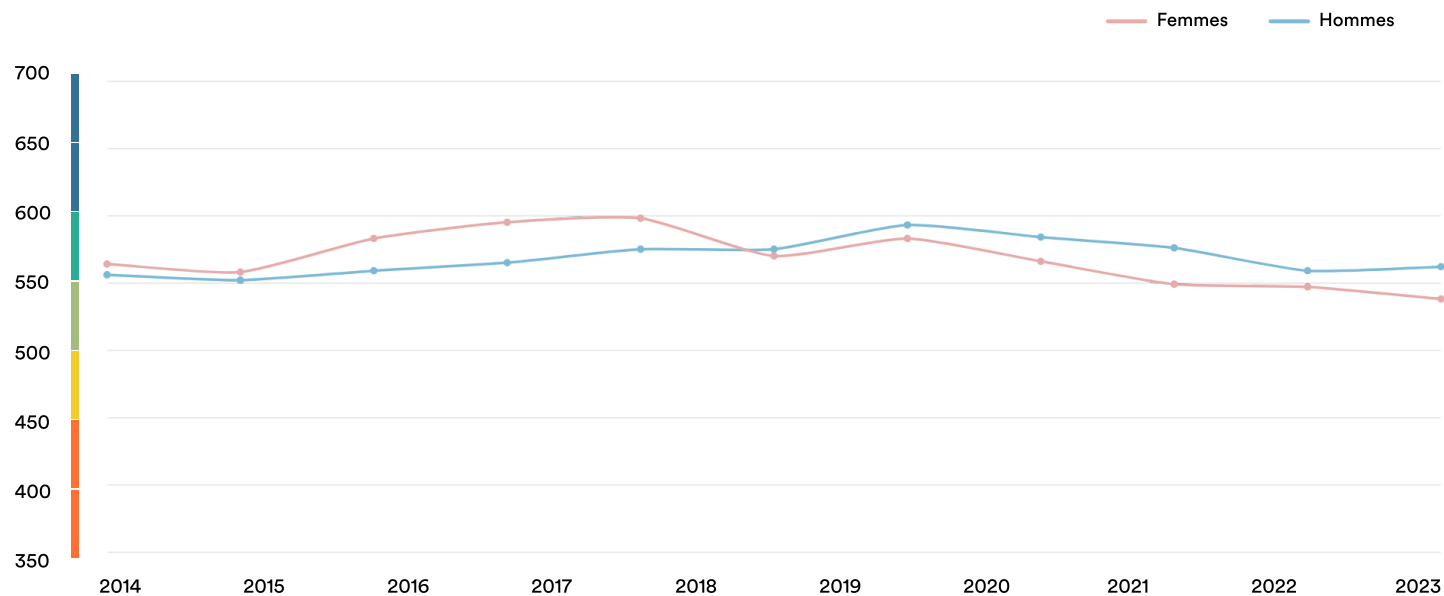
Villes

Zürich	620
Basel	618
Bern	614
Lucerne	613
Winterthur	605
St. Gallen	598
Genève	562
Lausanne	560

Évolution de l'âge



Évolution en matière d'égalité des sexes



About EF EPI

The EF English Proficiency Index (EF EPI) is a ranking of countries and regions by their English skills. This regional fact sheet is a companion to the EF EPI 2024 edition report. To read the full EF EPI report, with the ranking, regional analyses, and demographic trends, visit www.ef.com/epi. (<https://www.ef.com/epi>) The EF EPI is published by Signum International AG.